

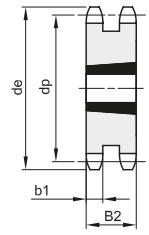
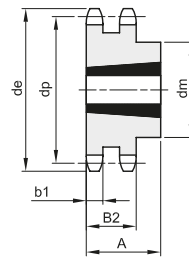
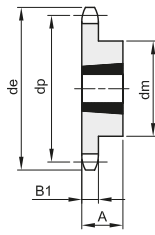
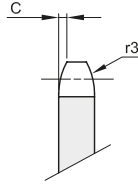


# PIGNONI PER BUSSOLA CONICA - DIN 8187 - ISO 606

## SPROCKETS FOR TAPER BUSHES - DIN 8187 - ISO 606

**3/8" x 7/32"**  
**9,525 x 5,72 mm**  
**Rullo 6,35 mm**  
**06B - 1 - 2 - 3**

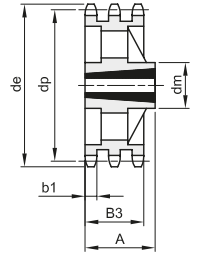
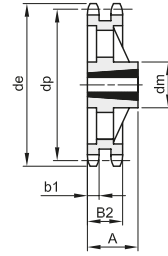
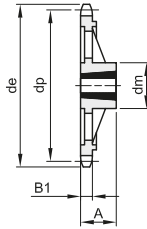
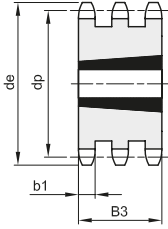
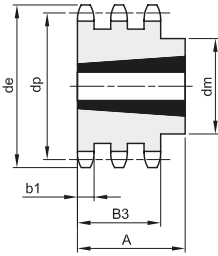
| B1  | B2   | B3   | b1  | C | r3 |
|-----|------|------|-----|---|----|
| 5,3 | 15,4 | 25,6 | 5,2 | 1 | 10 |



1

2

3



4

5

6

7

8

Materiale: Acciaio C45 / \*Materiale: Ghisa EN-GJL-200

| Z   | de    | dp     | semplici  |    |    |         |      |      | doppi     |    |    |         |      | tripli |           |      |      |         |      |      |
|-----|-------|--------|-----------|----|----|---------|------|------|-----------|----|----|---------|------|--------|-----------|------|------|---------|------|------|
|     |       |        | codice    | dm | A  | Bussola | Tipo | Kg.  | codice    | dm | A  | Bussola | Tipo | Kg.    | codice    | dm   | A    | Bussola | Tipo | Kg.  |
| 17  | 55,5  | 51,83  | 381330017 | 45 | 22 | 1008    | 1    | 0,11 | 382330017 | 41 | 22 | 1008    | 2    | 0,11   | 383330017 | 25,6 | 1008 | 5       | 0,15 |      |
| 18  | 58,6  | 54,85  | 381330018 | 45 | 22 | 1008    | 1    | 0,14 | 382330018 | 43 | 22 | 1008    | 2    | 0,15   |           |      |      |         |      |      |
| 19  | 61,6  | 57,86  | 381330019 | 45 | 22 | 1008    | 1    | 0,15 | 382330019 | 46 | 22 | 1008    | 2    | 0,18   | 383330019 | 25,6 | 1008 | 5       | 0,24 |      |
| 20  | 64,6  | 60,89  | 381330020 | 46 | 22 | 1008    | 1    | 0,16 | 382330020 | 48 | 22 | 1008    | 2    | 0,22   |           |      |      |         |      |      |
| 21  | 67,6  | 63,90  | 381330021 | 46 | 22 | 1008    | 1    | 0,18 | 382330021 | 49 | 22 | 1008    | 2    | 0,16   | 383330021 | 25,6 | 1008 | 5       | 0,34 |      |
| 22  | 70,6  | 66,93  | 381330022 | 55 | 22 | 1108    | 1    | 0,25 | 382330022 | 52 | 22 | 1108    | 2    | 0,28   |           |      |      |         |      |      |
| 23  | 73,7  | 69,95  | 381330023 | 63 | 25 | 1210    | 1    | 0,27 | 382330023 | 59 | 25 | 1210    | 2    | 0,27   | 383330023 | 25,6 | 1210 | 5       | 0,30 |      |
| 24  | 76,7  | 72,97  | 381330024 | 63 | 25 | 1210    | 1    | 0,30 | 382330024 | 61 | 25 | 1210    | 2    | 0,32   |           |      |      |         |      |      |
| 25  | 79,7  | 75,99  | 381330025 | 63 | 25 | 1210    | 1    | 0,32 | 382330025 | 64 | 25 | 1210    | 2    | 0,37   | 383330025 | 25,6 | 1210 | 5       | 0,41 |      |
| 26  | 82,7  | 79,02  | 381330026 | 63 | 25 | 1210    | 1    | 0,33 | 382330026 | 65 | 25 | 1210    | 2    | 0,44   |           |      |      |         |      |      |
| 27  | 85,7  | 82,04  | 381330027 | 63 | 25 | 1210    | 1    | 0,34 | 382330027 | 70 | 25 | 1210    | 2    | 0,50   | 383330027 | 25,6 | 1210 | 5       | 0,55 |      |
| 28  | 88,8  | 85,07  | 381330028 | 63 | 25 | 1210    | 1    | 0,37 | 382330028 | 70 | 25 | 1210    | 2    | 0,57   |           |      |      |         |      |      |
| 30  | 94,8  | 91,12  | 381330030 | 63 | 25 | 1210    | 1    | 0,39 | 382330030 | 75 | 25 | 1210    | 2    | 0,68   | 383330030 | 79   | 38   | 1615    | 4    | 0,88 |
| 38  | 119,0 | 115,34 | 381330038 | 70 | 25 | 1210    | 1    | 0,65 | 382330038 | 80 | 25 | 1610    | 2    | 1,03   | 383330038 | 90   | 38   | 1615    | 4    | 1,75 |
| 45  | 141,1 | 136,54 | 381330045 | 70 | 25 | 1210    | 1    | 1,01 |           |    |    |         |      |        |           |      |      |         |      |      |
| 57* | 177,5 | 172,91 | 381330057 | 83 | 25 | 1210    | 6    | 1,34 | 382330057 | 90 | 25 | 1610    | 7    | 1,16   |           |      |      |         |      |      |
| 76* | 235,1 | 230,49 | 381330076 | 83 | 25 | 1210    | 6    | 1,84 | 382330076 | 90 | 25 | 1610    | 7    | 2,19   |           |      |      |         |      |      |

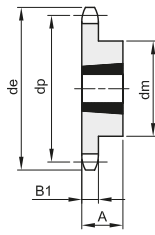
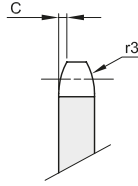


# PIGNONI PER BUSSOLA CONICA - DIN 8187 - ISO 606

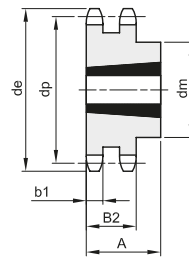
## SPROCKETS FOR TAPER BUSHES - DIN 8187 - ISO 606

**1/2" x 5/16"**  
**12,7 x 7,75 mm**  
 Rullo 8,51 mm  
**08B - 1 - 2 - 3**

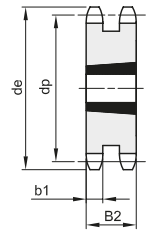
| B1  | B2 | B3   | b1 | C   | r3 |
|-----|----|------|----|-----|----|
| 7,2 | 21 | 34,9 | 7  | 1,3 | 13 |



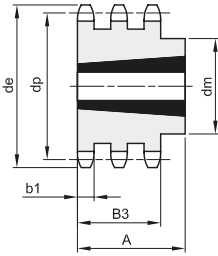
1



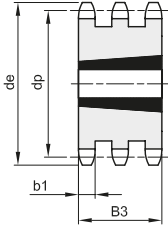
2



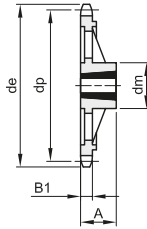
3



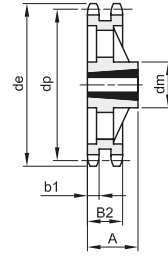
4



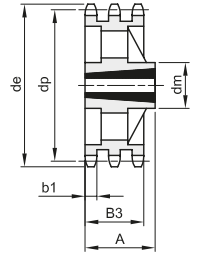
5



6



7



8

Materiale: Acciaio C45 / \*Materiale: Ghisa EN-GJL-200

| Z   | de    | dp     | semplici  |     |    |         |      | doppi |           |     |    |         | tripli |      |           |      |      |         |      |      |
|-----|-------|--------|-----------|-----|----|---------|------|-------|-----------|-----|----|---------|--------|------|-----------|------|------|---------|------|------|
|     |       |        | codice    | dm  | A  | Bussola | Tipo | Kg.   | codice    | dm  | A  | Bussola | Tipo   | Kg.  | codice    | dm   | A    | Bussola | Tipo | Kg.  |
| 15  | 65,9  | 61,09  | 381340015 | 45  | 22 | 1008    | 1    | 0,16  | 382340015 | 46  | 22 | 1008    | 2      | 0,22 | 383340015 | 34,9 | 1008 | 5       | 0,36 |      |
| 16  | 69,9  | 65,10  | 381340016 | 50  | 22 | 1108    | 1    | 0,20  | 382340016 | 50  | 22 | 1108    | 2      | 0,22 |           |      |      |         |      |      |
| 17  | 74,0  | 69,11  | 381340017 | 60  | 25 | 1210    | 1    | 0,22  | 382340017 | 56  | 25 | 1210    | 2      | 0,23 | 383340017 | 34,9 | 1210 | 5       | 0,35 |      |
| 18  | 78,0  | 73,14  | 381340018 | 60  | 25 | 1210    | 1    | 0,27  | 382340018 | 60  | 25 | 1210    | 2      | 0,30 |           |      |      |         |      |      |
| 19  | 82,0  | 77,16  | 381340019 | 63  | 25 | 1210    | 1    | 0,33  | 382340019 | 62  | 25 | 1210    | 2      | 0,38 | 383340019 | 62   | 38   | 1215    | 4    | 0,61 |
| 20  | 86,0  | 81,19  | 381340020 | 67  | 25 | 1610    | 1    | 0,27  | 382340020 | 66  | 25 | 1610    | 2      | 0,45 |           |      |      |         |      |      |
| 21  | 90,1  | 85,22  | 381340021 | 71  | 25 | 1610    | 1    | 0,36  | 382340021 | 70  | 25 | 1610    | 2      | 0,50 | 383340021 | 70   | 38   | 1615    | 4    | 0,65 |
| 22  | 94,1  | 89,24  | 381340022 | 71  | 25 | 1610    | 1    | 0,36  | 382340022 | 76  | 25 | 1610    | 2      | 0,55 |           |      |      |         |      |      |
| 23  | 98,1  | 93,27  | 381340023 | 76  | 25 | 1610    | 1    | 0,50  | 382340023 | 79  | 25 | 1610    | 2      | 0,62 | 383340023 | 70   | 38   | 1615    | 4    | 0,93 |
| 24  | 102,1 | 97,29  | 381340024 | 76  | 25 | 1610    | 1    | 0,53  | 382340024 | 84  | 32 | 2012    | 2      | 0,68 |           |      |      |         |      |      |
| 25  | 106,2 | 101,33 | 381340025 | 76  | 25 | 1610    | 1    | 0,56  | 382340025 | 87  | 32 | 2012    | 2      | 0,72 | 383340025 | 34,9 | 2012 | 5       | 0,85 |      |
| 26  | 110,2 | 105,36 | 381340026 | 76  | 25 | 1610    | 1    | 0,60  | 382340026 | 87  | 32 | 2012    | 2      | 0,82 |           |      |      |         |      |      |
| 27  | 114,2 | 109,40 | 381340027 | 76  | 25 | 1610    | 1    | 0,63  | 382340027 | 87  | 32 | 2012    | 2      | 0,92 | 383340027 | 34,9 | 2012 | 5       | 1,18 |      |
| 28  | 118,3 | 113,42 | 381340028 | 90  | 32 | 2012    | 1    | 0,77  | 382340028 | 87  | 32 | 2012    | 2      | 1,10 |           |      |      |         |      |      |
| 30  | 126,3 | 121,50 | 381340030 | 90  | 32 | 2012    | 1    | 0,91  | 382340030 | 87  | 32 | 2012    | 2      | 1,24 | 383340030 | 34,9 | 2012 | 5       | 1,73 |      |
| 38  | 158,6 | 153,80 | 381340038 | 90  | 32 | 2012    | 1    | 1,25  | 382340038 | 100 | 32 | 2012    | 2      | 2,50 | 383340038 | 34,9 | 2012 | 5       | 3,53 |      |
| 45  | 188,6 | 182,07 | 381340045 | 111 | 32 | 2012    | 1    | 1,68  |           |     |    |         |        |      |           |      |      |         |      |      |
| 57* | 237,1 | 230,54 | 381340057 | 111 | 32 | 2012    | 6    | 2,78  | 382340057 | 111 | 32 | 2012    | 7      | 3,64 |           |      |      |         |      |      |
| 76* | 313,9 | 307,33 | 381340076 | 111 | 32 | 2012    | 6    | 3,81  | 382340076 | 111 | 32 | 2012    | 7      | 5,09 |           |      |      |         |      |      |

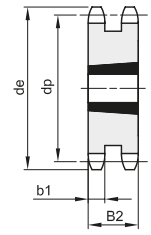
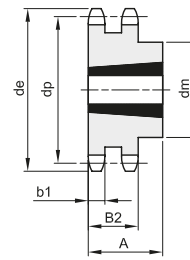
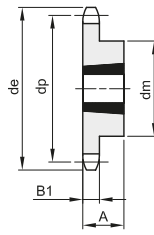
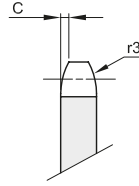


# PIGNONI PER BUSSOLA CONICA - DIN 8187 - ISO 606

## SPROCKETS FOR TAPER BUSHES - DIN 8187 - ISO 606

**5/8" x 3/8"**  
**15,875 x 9,65 mm**  
 Rullo 10,16 mm  
**10B - 1 - 2 - 3**

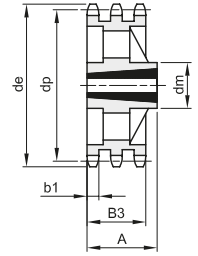
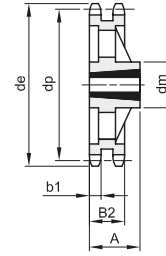
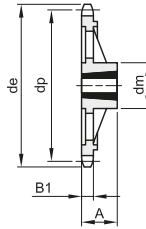
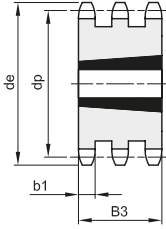
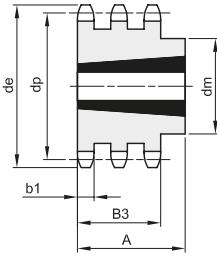
| B1  | B2   | B3   | b1 | C   | r3 |
|-----|------|------|----|-----|----|
| 9,1 | 25,5 | 42,1 | 9  | 1,6 | 16 |



1

2

3



4

5

6

7

8

Materiale: Acciaio C45 / \*Materiale: Ghisa EN-GJL-200

| Z   | de    | dp     | semplici  |     |    |         |      | doppi |           |      |      |         | tripli |           |           |      |    |         |      |      |
|-----|-------|--------|-----------|-----|----|---------|------|-------|-----------|------|------|---------|--------|-----------|-----------|------|----|---------|------|------|
|     |       |        | codice    | dm  | A  | Bussola | Tipo | Kg.   | codice    | dm   | A    | Bussola | Tipo   | Kg.       | codice    | dm   | A  | Bussola | Tipo | Kg.  |
| 13  | 73,2  | 66,33  | 381350013 | 47  | 22 | 1008    | 1    | 0,23  |           |      |      |         |        |           |           |      |    |         |      |      |
| 14  | 78,2  | 71,34  | 381350014 | 52  | 22 | 1108    | 1    | 0,27  |           |      |      |         |        |           |           |      |    |         |      |      |
| 15  | 83,2  | 76,35  | 381350015 | 60  | 25 | 1210    | 1    | 0,30  | 382350015 | 25,5 | 1210 | 3       | 0,38   | 383350015 | 42,1      | 1215 | 5  | 0,63    |      |      |
| 16  | 88,3  | 81,37  | 381350016 | 63  | 25 | 1210    | 1    | 0,38  | 382350016 | 25,5 | 1610 | 3       | 0,42   |           |           |      |    |         |      |      |
| 17  | 93,3  | 86,39  | 381350017 | 71  | 25 | 1610    | 1    | 0,38  | 382350017 | 25,5 | 1610 | 3       | 0,47   | 383350017 | 42,1      | 1215 | 5  | 1,01    |      |      |
| 18  | 98,3  | 91,42  | 381350018 | 71  | 25 | 1610    | 1    | 0,43  | 382350018 | 25,5 | 1610 | 3       | 0,60   |           |           |      |    |         |      |      |
| 19  | 103,3 | 96,44  | 381350019 | 75  | 25 | 1610    | 1    | 0,54  | 382350019 | 25,5 | 1610 | 3       | 0,72   | 383350019 | 42,1      | 1615 | 5  | 1,19    |      |      |
| 20  | 108,4 | 101,49 | 381350020 | 76  | 25 | 1610    | 1    | 0,61  | 382350020 | 25,5 | 1610 | 3       | 0,87   |           |           |      |    |         |      |      |
| 21  | 113,4 | 106,51 | 381350021 | 76  | 25 | 1610    | 1    | 0,65  | 382350021 | 25,5 | 1610 | 3       | 1,01   | 383350021 | 42,1      | 1615 | 5  | 1,66    |      |      |
| 22  | 118,4 | 111,55 | 381350022 | 76  | 25 | 1610    | 1    | 0,72  | 382350022 | 25,5 | 1610 | 3       | 1,18   |           |           |      |    |         |      |      |
| 23  | 123,5 | 116,58 | 381350023 | 76  | 25 | 1610    | 1    | 0,77  | 382350023 | 25,5 | 1610 | 3       | 1,35   | 383350023 | 42,1      | 2012 | 5  | 1,78    |      |      |
| 24  | 128,5 | 121,62 | 381350024 | 90  | 32 | 2012    | 1    | 0,98  | 382350024 | 90   | 32   | 2012    | 2      | 1,45      |           |      |    |         |      |      |
| 25  | 133,6 | 126,66 | 381350025 | 90  | 32 | 2012    | 1    | 1,05  | 382350025 | 90   | 32   | 2012    | 2      | 1,55      | 383350025 | 105  | 44 | 2517    | 4    | 1,81 |
| 26  | 138,6 | 131,70 | 381350026 | 90  | 32 | 2012    | 1    | 1,11  | 382350026 | 90   | 32   | 2012    | 2      | 1,75      |           |      |    |         |      |      |
| 27  | 143,6 | 136,74 | 381350027 | 90  | 32 | 2012    | 1    | 1,17  | 382350027 | 90   | 32   | 2012    | 2      | 1,98      | 383350027 | 110  | 44 | 2517    | 4    | 2,45 |
| 28  | 148,7 | 141,78 | 381350028 | 90  | 32 | 2012    | 1    | 1,29  | 382350028 | 90   | 32   | 2012    | 2      | 2,30      |           |      |    |         |      |      |
| 30  | 158,8 | 151,87 | 381350030 | 90  | 32 | 2012    | 1    | 1,40  | 382350030 | 90   | 32   | 2012    | 2      | 2,63      | 383350030 | 120  | 44 | 2517    | 4    | 3,54 |
| 38  | 199,1 | 192,23 | 381350038 | 100 | 32 | 2012    | 1    | 2,43  |           |      |      |         |        |           |           |      |    |         |      |      |
| 45  | 236,0 | 227,58 | 381350045 | 111 | 32 | 2012    | 1    | 3,55  |           |      |      |         |        |           |           |      |    |         |      |      |
| 57* | 296,6 | 288,18 | 381350057 | 111 | 32 | 2012    | 6    | 4,28  |           |      |      |         |        |           |           |      |    |         |      |      |
| 76* | 392,5 | 384,16 | 381350076 | 111 | 32 | 2012    | 6    | 5,95  |           |      |      |         |        |           |           |      |    |         |      |      |

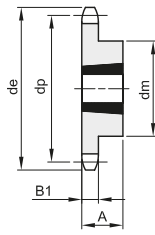
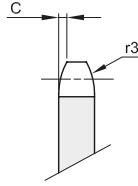


# PIGNONI PER BUSSOLA CONICA - DIN 8187 - ISO 606

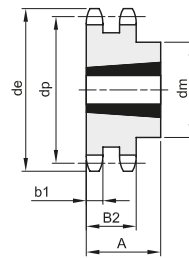
## SPROCKETS FOR TAPER BUSHES - DIN 8187 - ISO 606

**3/4" x 7/16"**  
**19,05 x 11,68 mm**  
 Rullo 12,07 mm  
**12B - 1 - 2 - 3**

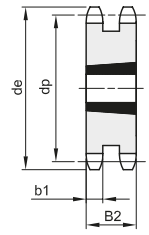
| B1   | B2   | B3   | b1   | C | r3 |
|------|------|------|------|---|----|
| 11,1 | 30,3 | 49,8 | 10,8 | 2 | 19 |



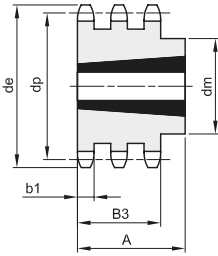
1



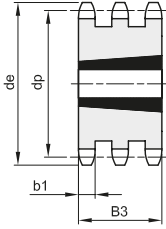
2



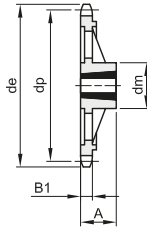
3



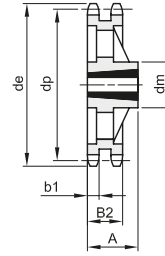
4



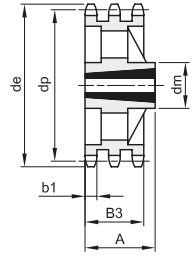
5



6



7



8

Materiale: Acciaio C45 / \*Materiale: Ghisa EN-GJL-200

| Z   | de    | dp     | semplici  |     |    |         |      | doppi |           |      |      |         | tripli |           |           |      |      |         |      |       |  |
|-----|-------|--------|-----------|-----|----|---------|------|-------|-----------|------|------|---------|--------|-----------|-----------|------|------|---------|------|-------|--|
|     |       |        | codice    | dm  | A  | Bussola | Tipo | Kg.   | codice    | dm   | A    | Bussola | Tipo   | Kg.       | codice    | dm   | A    | Bussola | Tipo | Kg.   |  |
| 13  | 87,8  | 79,60  | 381360013 | 60  | 25 | 1210    | 1    | 0,35  |           |      |      |         |        |           |           |      |      |         |      |       |  |
| 14  | 93,8  | 85,61  | 381360014 | 67  | 25 | 1610    | 1    | 0,40  |           |      |      |         |        |           |           |      |      |         |      |       |  |
| 15  | 99,8  | 91,62  | 381360015 | 70  | 25 | 1610    | 1    | 0,44  | 382360015 | 30,3 | 1610 | 3       | 0,68   | 383360015 | 49,8      | 1615 | 5    | 1,11    |      |       |  |
| 16  | 105,8 | 97,65  | 381360016 | 71  | 25 | 1610    | 1    | 0,53  | 382360016 | 30,3 | 1610 | 3       | 0,89   |           |           |      |      |         |      |       |  |
| 17  | 111,9 | 103,67 | 381360017 | 76  | 25 | 1610    | 1    | 0,66  | 382360017 | 30,3 | 1610 | 3       | 1,14   | 383360017 | 49,8      | 1615 | 5    | 1,75    |      |       |  |
| 18  | 117,9 | 109,71 | 381360018 | 90  | 32 | 2012    | 1    | 0,86  | 382360018 | 90   | 32   | 2012    | 2      | 1,18      |           |      |      |         |      |       |  |
| 19  | 123,9 | 115,73 | 381360019 | 90  | 32 | 2012    | 1    | 0,94  | 382360019 | 90   | 32   | 2012    | 2      | 1,24      | 383360019 | 49,8 | 2012 | 5       | 1,99 |       |  |
| 20  | 130,0 | 121,78 | 381360020 | 90  | 32 | 2012    | 1    | 1,04  | 382360020 | 108  | 44   | 2517    | 2      | 1,40      |           |      |      |         |      |       |  |
| 21  | 136,0 | 127,81 | 381360021 | 102 | 44 | 2517    | 1    | 1,24  | 382360021 | 108  | 44   | 2517    | 2      | 1,68      | 383360021 | 49,8 | 2517 | 5       | 2,09 |       |  |
| 22  | 142,0 | 133,86 | 381360022 | 108 | 44 | 2517    | 1    | 1,60  | 382360022 | 108  | 44   | 2517    | 2      | 1,99      |           |      |      |         |      |       |  |
| 23  | 148,1 | 139,90 | 381360023 | 108 | 44 | 2517    | 1    | 1,70  | 382360023 | 108  | 44   | 2517    | 2      | 2,24      | 383360023 | 49,8 | 2517 | 5       | 3,00 |       |  |
| 24  | 154,1 | 145,94 | 381360024 | 108 | 44 | 2517    | 1    | 1,81  | 382360024 | 108  | 44   | 2517    | 2      | 2,54      |           |      |      |         |      |       |  |
| 25  | 160,2 | 151,99 | 381360025 | 108 | 44 | 2517    | 1    | 1,93  | 382360025 | 108  | 44   | 2517    | 2      | 2,87      | 383360025 | 49,8 | 2517 | 5       | 3,98 |       |  |
| 26  | 166,2 | 158,04 | 381360026 | 108 | 44 | 2517    | 1    | 2,04  | 382360026 | 108  | 44   | 2517    | 2      | 3,17      |           |      |      |         |      |       |  |
| 27  | 172,3 | 164,09 | 381360027 | 108 | 44 | 2517    | 1    | 2,14  | 382360027 | 108  | 44   | 2517    | 2      | 3,55      | 383360027 | 140  | 51   | 3020    | 4    | 3,90  |  |
| 28  | 178,3 | 170,13 | 381360028 | 108 | 44 | 2517    | 1    | 2,37  | 382360028 | 108  | 44   | 2517    | 2      | 4,10      |           |      |      |         |      |       |  |
| 30  | 190,4 | 182,24 | 381360030 | 108 | 44 | 2517    | 1    | 2,60  | 382360030 | 108  | 44   | 2517    | 2      | 4,62      | 383360030 | 140  | 51   | 3020    | 4    | 5,64  |  |
| 38  | 238,9 | 230,69 | 381360038 | 108 | 44 | 2517    | 1    | 3,93  | 382360038 | 140  | 51   | 3020    | 2      | 8,11      | 383360038 | 140  | 51   | 3020    | 4    | 11,58 |  |
| 45  | 283,2 | 273,10 | 381360045 | 124 | 44 | 2517    | 1    | 5,52  |           |      |      |         |        |           |           |      |      |         |      |       |  |
| 57* | 355,9 | 345,81 | 381360057 | 124 | 44 | 2517    | 6    | 6,48  | 382360057 | 160  | 51   | 3020    | 7      | 10,28     | 383360057 | 160  | 51   | 3020    | 8    | 13,23 |  |
| 76* | 471,1 | 460,99 | 381360076 | 124 | 44 | 2517    | 6    | 9,71  | 382360076 | 160  | 51   | 3020    | 7      | 15,24     |           |      |      |         |      |       |  |

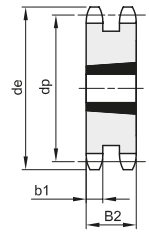
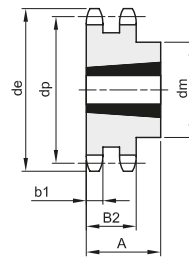
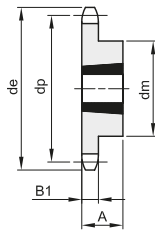
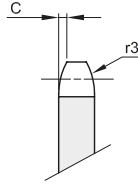


# PIGNONI PER BUSSOLA CONICA - DIN 8187 - ISO 606

## SPROCKETS FOR TAPER BUSHES - DIN 8187 - ISO 606

**1" x 17,02 mm**  
**25,4 x 17,02 mm**  
**Rullo 15,88 mm**  
**16B - 1 - 2 - 3**

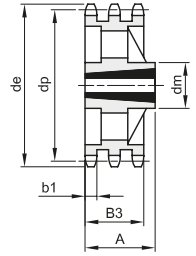
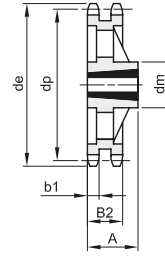
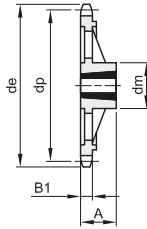
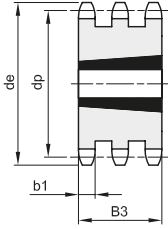
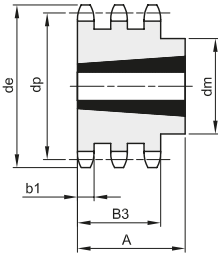
| B1   | B2   | B3   | b1   | C   | r3 |
|------|------|------|------|-----|----|
| 16,2 | 47,7 | 79,6 | 15,8 | 2,5 | 26 |



1

2

3



4

5

6

7

8

Materiale: Acciaio C45 / \*Materiale: Ghisa EN-GJL-200

| Z   | de    | dp     | semplici  |     |    |         |      | doppi |           |      |      |         | tripli |           |           |      |      |         |      |       |
|-----|-------|--------|-----------|-----|----|---------|------|-------|-----------|------|------|---------|--------|-----------|-----------|------|------|---------|------|-------|
|     |       |        | codice    | dm  | A  | Bussola | Tipo | Kg.   | codice    | dm   | A    | Bussola | Tipo   | Kg.       | codice    | dm   | A    | Bussola | Tipo | Kg.   |
| 13  | 117,7 | 106,13 | 381380013 | 73  | 38 | 1615    | 1    | 0,98  |           |      |      |         |        |           |           |      |      |         |      |       |
| 14  | 125,7 | 114,15 | 381380014 | 75  | 38 | 1615    | 1    | 1,14  |           |      |      |         |        |           |           |      |      |         |      |       |
| 15  | 133,7 | 122,16 | 381380015 | 76  | 38 | 1615    | 1    | 1,30  | 382380015 | 47,7 | 2012 | 3       | 2,11   |           |           |      |      |         |      |       |
| 16  | 141,8 | 130,20 | 381380016 | 90  | 32 | 2012    | 1    | 1,40  | 382380016 | 47,7 | 2517 | 3       | 2,25   |           |           |      |      |         |      |       |
| 17  | 149,8 | 138,23 | 381380017 | 90  | 32 | 2012    | 1    | 1,59  | 382380017 | 47,7 | 2517 | 3       | 2,53   | 383380017 | 79,6      | 2517 | 5    | 4,29    |      |       |
| 18  | 157,8 | 146,28 | 381380018 | 108 | 44 | 2517    | 1    | 2,10  | 382380018 | 47,7 | 2517 | 3       | 3,10   |           |           |      |      |         |      |       |
| 19  | 165,9 | 154,31 | 381380019 | 108 | 44 | 2517    | 1    | 2,29  | 382380019 | 47,7 | 2517 | 3       | 3,80   | 383380019 | 79,6      | 3030 | 5    | 4,36    |      |       |
| 20  | 173,9 | 162,38 | 381380020 | 110 | 44 | 2517    | 1    | 2,60  | 382380020 | 47,7 | 2517 | 3       | 4,10   |           |           |      |      |         |      |       |
| 21  | 182,0 | 170,42 | 381380021 | 110 | 44 | 2517    | 1    | 2,81  | 382380021 | 140  | 51   | 3020    | 2      | 4,15      | 383380021 | 79,6 | 3030 | 5       | 6,69 |       |
| 22  | 190,1 | 178,48 | 381380022 | 110 | 44 | 2517    | 1    | 3,10  | 382380022 | 140  | 51   | 3020    | 2      | 4,90      |           |      |      |         |      |       |
| 23  | 198,1 | 186,53 | 381380023 | 110 | 44 | 2517    | 1    | 3,38  | 382380023 | 140  | 51   | 3020    | 2      | 5,69      | 383380023 | 159  | 89   | 3535    | 4    | 7,80  |
| 24  | 206,2 | 194,59 | 381380024 | 110 | 44 | 2517    | 1    | 3,70  | 382380024 | 140  | 51   | 3020    | 2      | 6,00      |           |      |      |         |      |       |
| 25  | 214,2 | 202,66 | 381380025 | 110 | 44 | 2517    | 1    | 3,97  | 382380025 | 140  | 51   | 3020    | 2      | 6,38      | 383380025 | 175  | 89   | 3535    | 4    | 10,93 |
| 26  | 222,3 | 210,72 | 381380026 | 110 | 44 | 2517    | 1    | 4,26  | 382380026 | 140  | 51   | 3020    | 2      | 7,80      |           |      |      |         |      |       |
| 27  | 230,4 | 218,79 | 381380027 | 110 | 44 | 2517    | 1    | 4,55  | 382380027 | 140  | 51   | 3020    | 2      | 9,27      | 383380027 | 175  | 89   | 3535    | 4    | 14,06 |
| 28  | 238,4 | 226,85 | 381380028 | 110 | 44 | 2517    | 1    | 5,26  | 382380028 | 140  | 51   | 3020    | 2      | 11,40     |           |      |      |         |      |       |
| 30  | 254,6 | 242,99 | 381380030 | 120 | 44 | 2517    | 1    | 5,97  | 382380030 | 140  | 76   | 3030    | 2      | 13,50     | 383380030 | 175  | 89   | 3535    | 4    | 19,10 |
| 38  | 319,2 | 307,59 | 381380038 | 160 | 51 | 3020    | 1    | 8,73  | 382380038 | *160 | 76   | 3030    | 7      | 14,94     | 383380038 | *175 | 89   | 3535    | 8    | 21,65 |
| 45  | 377,9 | 364,12 | 381380045 | 160 | 51 | 3020    | 1    | 12,49 | 382380045 | *160 | 76   | 3030    | 7      | 19,80     | 383380045 | *175 | 89   | 3535    | 8    | 28,10 |
| 57* | 474,9 | 461,07 | 381380057 | 160 | 51 | 3020    | 6    | 13,87 | 382380057 | 175  | 89   | 3535    | 7      | 22,00     | 383380057 | 216  | 102  | 4040    | 8    | 40,50 |
| 76* | 628,4 | 614,65 | 381380076 | 160 | 51 | 3020    | 6    | 22,63 | 382380076 | 175  | 89   | 3535    | 7      | 37,00     | 383380076 | 216  | 102  | 4040    | 8    | 53,30 |

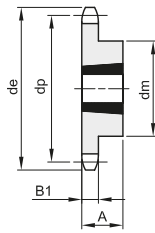
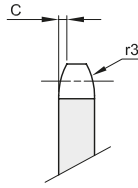


# PIGNONI PER BUSSOLA CONICA - DIN 8187 - ISO 606

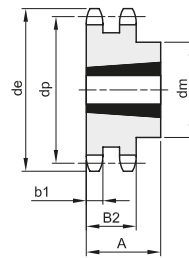
## SPROCKETS FOR TAPER BUSHES - DIN 8187 - ISO 606

**1"1/4 x 3/4"**  
**31,75 x 19,56 mm**  
 Rullo 19,05 mm  
**20B - 1 - 2 - 3**

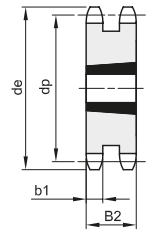
| B1   | B2   | B3 | b1   | C   | r3 |
|------|------|----|------|-----|----|
| 18,5 | 54,6 | 91 | 18,2 | 3,5 | 32 |



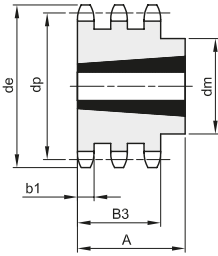
1



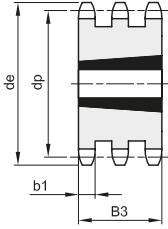
2



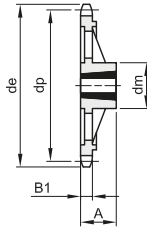
3



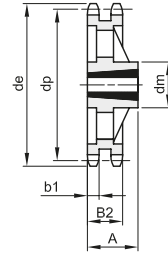
4



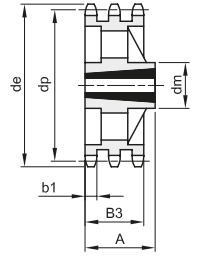
5



6



7



8

Materiale: Acciaio C45 / \*Materiale: Ghisa EN-GJL-200

| Z   | de    | dp     | semplici  |     |    |         |      | doppi |           |      |      |         | tripli |           |           |      |      |         |       |       |
|-----|-------|--------|-----------|-----|----|---------|------|-------|-----------|------|------|---------|--------|-----------|-----------|------|------|---------|-------|-------|
|     |       |        | codice    | dm  | A  | Bussola | Tipo | Kg.   | codice    | dm   | A    | Bussola | Tipo   | Kg.       | codice    | dm   | A    | Bussola | Tipo  | Kg.   |
| 12  | 137,0 | 122,68 | 381400012 | 90  | 32 | 1615    | 1    | 1,90  |           |      |      |         |        |           |           |      |      |         |       |       |
| 13  | 147,5 | 132,65 | 381400013 | 90  | 32 | 2012    | 1    | 1,50  | 382400013 | 54,6 | 2517 | 3       | 2,20   |           |           |      |      |         |       |       |
| 14  | 157,6 | 142,68 | 381400014 | 110 | 44 | 2517    | 1    | 2,40  |           |      |      |         |        |           |           |      |      |         |       |       |
| 15  | 167,7 | 152,72 | 381400015 | 110 | 44 | 2517    | 1    | 3,39  | 382400015 | 54,6 | 2517 | 3       | 4,00   | 383400015 | 91        | 3020 | 5    | 4,43    |       |       |
| 16  | 177,7 | 162,75 | 381400016 | 110 | 44 | 2517    | 1    | 4,23  |           |      |      |         |        |           |           |      |      |         |       |       |
| 17  | 187,7 | 172,78 | 381400017 | 110 | 44 | 2517    | 1    | 5,07  | 382400017 | 54,6 | 2517 | 3       | 5,00   | 383400017 | 91        | 3030 | 5    | 7,39    |       |       |
| 18  | 197,8 | 182,85 | 381400018 | 110 | 44 | 2517    | 1    | 5,91  |           |      |      |         |        |           |           |      |      |         |       |       |
| 19  | 207,9 | 192,91 | 381400019 | 110 | 44 | 2517    | 1    | 6,75  | 382400019 | 140  | 76   | 3030    | 2      | 6,30      | 383400019 | 91   | 3030 | 5       | 11,65 |       |
| 20  | 217,9 | 202,98 | 381400020 | 110 | 44 | 2517    | 1    | 7,23  |           |      |      |         |        |           |           |      |      |         |       |       |
| 21  | 228,0 | 213,04 | 381400021 | 120 | 44 | 2517    | 1    | 7,70  | 382400021 | 140  | 76   | 3030    | 2      | 8,80      | 383400021 | 91   | 3535 | 5       | 12,80 |       |
| 23  | 248,2 | 233,17 | 381400023 | 120 | 44 | 2517    | 1    | 8,78  | 382400023 | 140  | 76   | 3030    | 2      | 9,80      | 383400023 | 91   | 3535 | 5       | 17,38 |       |
| 25  | 268,4 | 253,33 | 381400025 | 120 | 44 | 2517    | 1    | 9,50  | 382400025 | 140  | 76   | 3030    | 2      | 10,50     | 383400025 | 91   | 3535 | 5       | 22,40 |       |
| 30  | 318,7 | 303,75 | 381400030 | 160 | 51 | 3020    | 1    | 11,60 | 382400030 | 160  | 76   | 3030    | 2      | 14,00     | 383400030 | 91   | 3535 | 5       | 36,50 |       |
| 38* | 399,4 | 384,49 | 381400038 | 160 | 51 | 3020    | 6    | 15,80 | 382400038 | 160  | 76   | 3030    | 7      | 22,00     | 383400038 | 178  | 91   | 3535    | 8     | 28,00 |
| 57* | 592,3 | 576,36 | 381400057 | 160 | 51 | 3020    | 6    | 17,90 | 382400057 | 175  | 89   | 3535    | 7      | 37,00     | 383400057 | 216  | 102  | 4040    | 8     | 42,00 |
| 76* | 784,3 | 768,32 | 381400076 | 160 | 51 | 3020    | 6    | 25,00 | 382400076 | 175  | 89   | 3535    | 7      | 62,00     | 383400076 | 260  | 114  | 4545    | 8     | 85,00 |

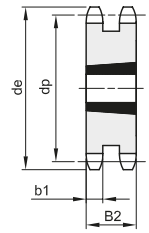
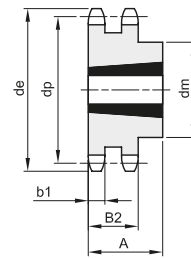
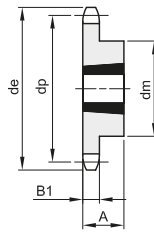
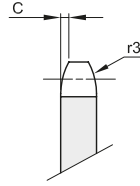


# PIGNONI PER BUSSOLA CONICA - DIN 8187 - ISO 606

## SPROCKETS FOR TAPER BUSHES - DIN 8187 - ISO 606

**1"1/2 x 1"**  
**38,1 x 25,4 mm**  
 Rullo 25,4 mm  
**24B - 1 - 2 - 3**

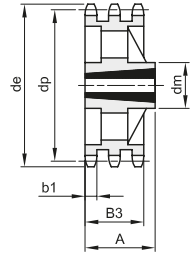
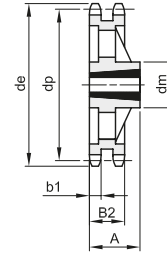
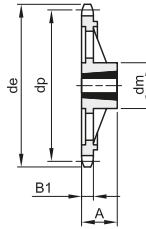
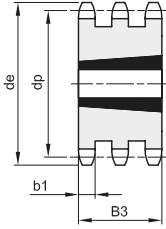
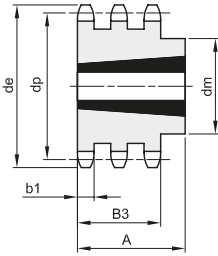
| B1   | B2 | B3    | b1   | C | r3 |
|------|----|-------|------|---|----|
| 24,1 | 72 | 120,3 | 23,6 | 4 | 38 |



1

2

3



4

5

6

7

8

Materiale: Acciaio C45 / \*Materiale: Ghisa EN-GJL-200

| Z   | de    | dp     | semplici  |     |    |         |      | doppi |           |     |      |         | tripli |           |           |       |      |         |        |     |
|-----|-------|--------|-----------|-----|----|---------|------|-------|-----------|-----|------|---------|--------|-----------|-----------|-------|------|---------|--------|-----|
|     |       |        | codice    | dm  | A  | Bussola | Tipo | Kg.   | codice    | dm  | A    | Bussola | Tipo   | Kg.       | codice    | dm    | A    | Bussola | Tipo   | Kg. |
| 11  | 149,0 | 135,21 | 381420011 | 90  | 32 | 2012    | 1    | 1,70  |           |     |      |         |        |           |           |       |      |         |        |     |
| 12  | 161,0 | 147,22 | 381420012 | 90  | 32 | 2012    | 1    | 2,16  |           |     |      |         |        |           |           |       |      |         |        |     |
| 13  | 173,0 | 159,18 | 381420013 | 110 | 44 | 2517    | 1    | 2,77  | 382420013 | 72  | 2517 | 3       | 5,30   |           |           |       |      |         |        |     |
| 14  | 185,0 | 171,22 | 381420014 | 120 | 44 | 2517    | 1    | 3,60  |           |     |      |         |        |           |           |       |      |         |        |     |
| 15  | 197,0 | 183,26 | 381420015 | 120 | 44 | 2517    | 1    | 4,20  | 382420015 | 72  | 3020 | 3       | 6,60   | 383420015 | 120,3     | 3030  | 5    | 20,00   |        |     |
| 17  | 221,0 | 207,34 | 381420017 | 140 | 51 | 3020    | 1    | 5,40  | 382420017 | 72  | 3020 | 3       | 10,30  | 383420017 | 120,3     | 3030  | 5    | 25,00   |        |     |
| 18  | 233,0 | 219,42 | 381420018 | 140 | 51 | 3020    | 1    | 6,10  |           |     |      |         |        |           |           |       |      |         |        |     |
| 19  | 245,5 | 231,49 | 381420019 | 140 | 51 | 3020    | 1    | 6,85  | 382420019 | 160 | 76   | 3030    | 2      | 14,80     | 383420019 | 120,3 | 3535 | 5       | 30,00  |     |
| 20  | 257,5 | 243,57 | 381420020 | 140 | 51 | 3020    | 1    | 7,76  |           |     |      |         |        |           |           |       |      |         |        |     |
| 21  | 270,5 | 255,65 | 381420021 | 140 | 51 | 3020    | 1    | 8,52  | 382420021 | 160 | 76   | 3030    | 2      | 19,50     | 383420021 | 120,3 | 4040 | 5       | 35,00  |     |
| 23  | 294,5 | 279,80 | 381420023 | 160 | 51 | 3020    | 1    | 11,31 | 382420023 | 175 | 89   | 3535    | 2      | 24,00     | 383420023 | 120,3 | 4040 | 5       | 44,00  |     |
| 25  | 319,0 | 304,00 | 381420025 | 160 | 51 | 3020    | 1    | 13,33 | 382420025 | 175 | 89   | 3535    | 2      | 29,00     | 383420025 | 120,3 | 4040 | 5       | 50,00  |     |
| 30  | 379,5 | 364,50 | 381420030 | 160 | 51 | 3020    | 1    | 19,00 | 382420030 | 175 | 89   | 3535    | 2      | 40,00     | 383420030 | 120,3 | 4040 | 5       | 60,00  |     |
| 38* | 476,5 | 461,39 | 381420038 | 160 | 76 | 3030    | 6    | 24,00 | 382420038 | 175 | 89   | 3535    | 7      | 44,00     | 383420038 | 120,3 | 4040 | 8       | 66,00  |     |
| 57* | 707,5 | 691,63 | 381420057 | 160 | 76 | 3030    | 6    | 45,00 | 382420057 | 175 | 89   | 3535    | 7      | 72,00     | 383420057 | 120,3 | 4545 | 8       | 120,00 |     |
| 76* | 939,0 | 921,98 | 381420076 | 175 | 89 | 3535    | 6    | 70,00 | 382420076 | 216 | 102  | 4040    | 7      | 107,00    | 383420076 | 120,3 | 4545 | 8       | 131,00 |     |